

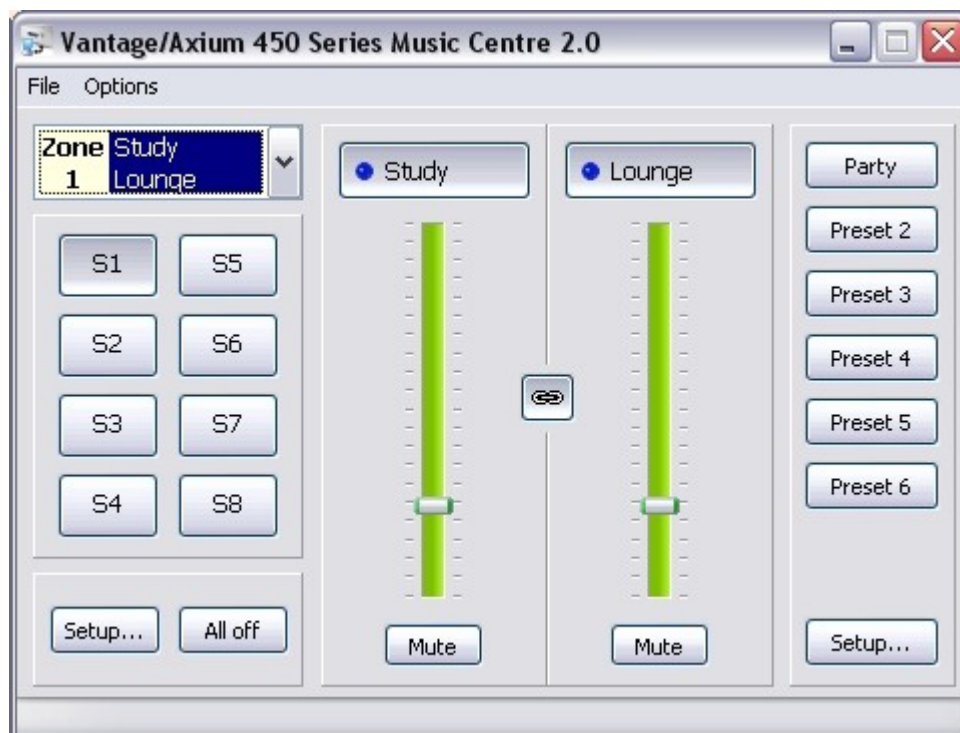


Axium Music Centre

OVERVIEW

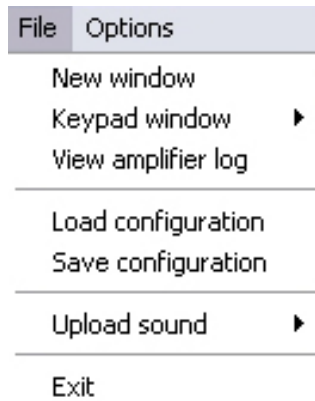
Axium Music Centre controls monitors and programs a 451/452AV multizone amplifier or stack of amplifiers.

MAIN WINDOW



The main window provides most of the control and monitoring functionality of AMC. It contains a menu, zone selection tab, amplifier functions & preset buttons. Further amplifier control functions are accessed via the Setup button. The Preset Setup opens a page for preset programming.

FILE MENU



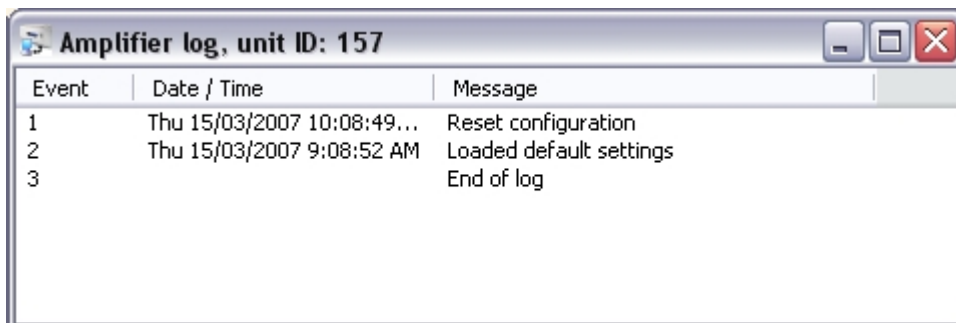
New Window: Opens another or multiple main windows.

Keypad window: Opens a window representing a keypad: Select AX-KPB.

If a keypad is connected to the 451/452AV then selecting a key on the keypad using a left mouse click will cause the specific zoned keypad to emit the key's IR command.



View amplifier log: Displays the amplifier log for the connected 451/452AV amplifier. The log is a data/time record of thermal protection and reset events.



Load Configuration: Opens a directory where a configuration file may be selected and uploaded to an amplifier. The configuration file stores all amplifier zone settings in an installation.

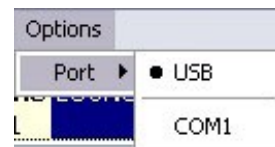
Save Configuration: Opens a directory where a configuration file may be saved.

Upload sound: Opens a directory where a suitable wave file may be selected and uploaded to the amplifier doorbell memory.

Exit: Closes AMC.

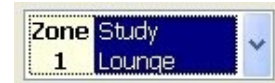
OPTIONS MENU

Select the appropriate communication port.
If connecting via USB to the 451/452AV amplifier for the first time, windows may require directing to the appropriate driver.
See: "USB driver setup"



ZONE SELECTION TAB

The currently selected zone is displayed in the tab.



Moving the cursor over the tab displays details of the connected amplifier.

Selects the zone to control.
Devices on zone 1:
451/452-AV, unit ID: 426, firmware v5

To select a different zone, select the down arrow.
A zone list is displayed. Make the required selection.
The main window displays the settings of the selected zone.



STANDBY

When a zone is 'On' the standby button is depressed and the button's blue indicator is illuminated.



Both the Amplifier and Preamp standby buttons may be labelled with room names. Right mouse click above the standby button, The label edit window opens; change the text and select OK to save and exit. The text is transferred to the multi-zone amplifier.



VOLUME SLIDERS, MUTE & PREAMP MODE

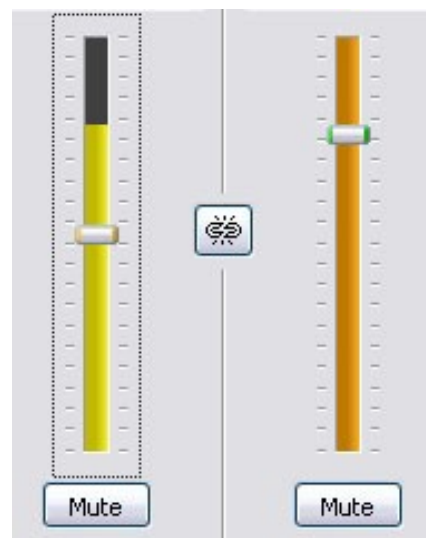
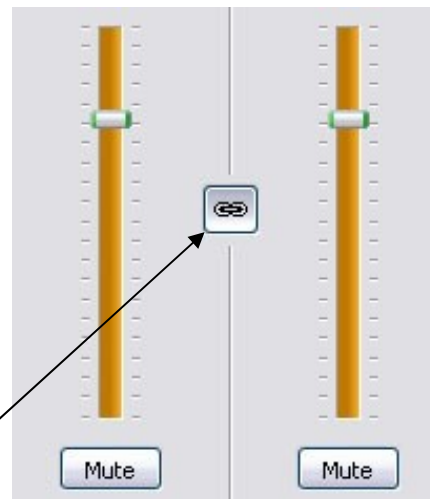
The volume slider is adjusted using a left mouse click & hold, dragging the slider to the required level.

A volume offset between amplifier and preamplifier may be programmed: Move the cursor above a volume slider, hold down the keyboard 'Ctrl' key and increment or decrement the slider using the keyboard 'Up' or 'Down' keys.

When an amplifier or preamplifier is muted the Mute button is depressed. Select the Mute button to toggle the mute function.

The preamplifier defaults to 'Tracking' mode indicated by the link icon in the preamplifier mode button. Selecting the button toggles the mode. The broken link icon indicates Independent mode where the preamplifier functions operate independently of the amplifier functions.

A volume slider may be programmed to have a maximum volume limit. Move the cursor above the volume slider, hold down the keyboard 'Shift' key and increment or decrement the slider using the keyboard 'Up' or 'Down' keys. A dark blue bar above the slider indicates the volume limit.

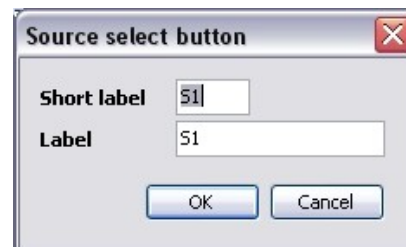


SOURCE SELECTS

There are eight source selects, the selected source is shown depressed. Selecting a source on AMC changes the source for the current zone on the connected 451/452AV amplifier.



The source selects may be re-named using a right mouse click over the source key; A label edit window opens. The Short Label is for the 451/452AV Front Panel LCD and has a maximum of three characters. Text entered into the Label field is displayed on the AMC source select key



SETTINGS & ALL OFF

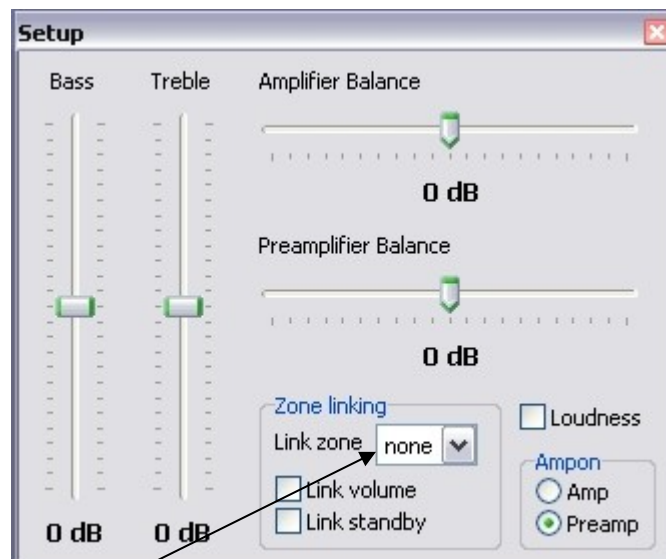
Selecting the 'All off' button will turn all connected Zones off.



Selecting the "Setup" button opens the setup window, Where further amplifier and preamplifier functions are accessed

Sliders for Bass, Treble, Amplifier and Preamplifier Balance may be adjusted using a Left mouse click & hold while dragging the slider to the required Level.

The loudness control defaults off. When independent mode is selected loudness is disabled. Loudness and Preamplifier Independence are mutually exclusive.



Any zone may be linked to one other zone. The zone may be assigned by selecting the Link Zone. When linked, source selection will be the same for both zones. 'Link Volume' and 'Link Standby' may optionally be selected where the volume levels and standby status will be the same for the linked zones.

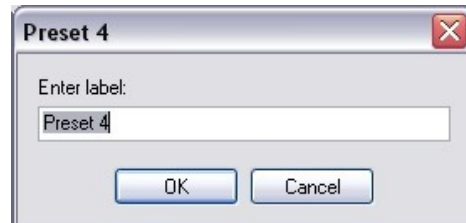
The 'Ampon' selection defaults to the preamplifier. The assignment determines which device (Amp or Preamplifier) the Ampon output trigger tracks.

PRESETS



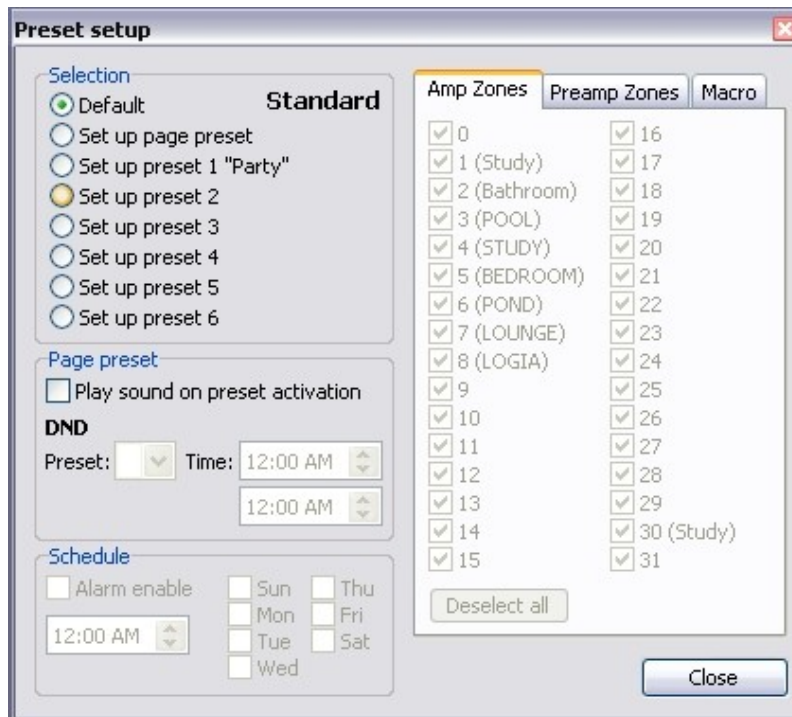
Six momentary preset buttons are provided. Momentary presets cause a 451/452AV amplifier or a stack of amplifiers to be set to predetermined states, i.e: source selection, volume level, standby status etc. If a Preset has not been programmed then nothing will happen when it is selected.

The Presets may be re-named using a right mouse click on the Preset key: opens a label edit window. Enter the required label text, Click OK to save and exit.



The Preset 'Setup' button opens the Preset Setup window:

PRESET SETUP



Presets: Preset programming effects all connected zones.

There are seven presets: Preset 1 – Preset 6, and the Page Preset which is triggered by a contact closure across the 'Pg' and 'OV' terminals on the 451/452AV's rear panel.

The preset definitions are stored in the multi-zone amplifiers.

To program Preset 1, left mouse click over the 'Set up preset 1' and change all amplifier functions as required in the main window and amplifier setup menu. To modify / access other zone amplifier functions simply change the zone in the zone selection tab, or open multiple main windows in the file menu, setting each window to the appropriate zone.

Once setup, select 'Default' to save and exit. Preset 1 is programmed.

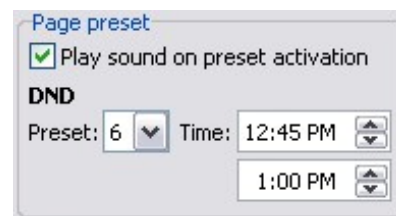
The process is the same for the other presets.

Page Preset: To program the page preset select 'Set up page preset', and change the amplifier functions as required. If the doorbell generator is required, then select the "Play sound on preset activation" tab. – this automatically selects source input S8 for the connected zones.

A Do Not Disturb (DND) function may be included in the page preset, where during a specified time window an alternative Preset is loaded.

Enter the time window start and finish times, and select a Preset that is to be called during DND.

Select 'Default' to save and exit.

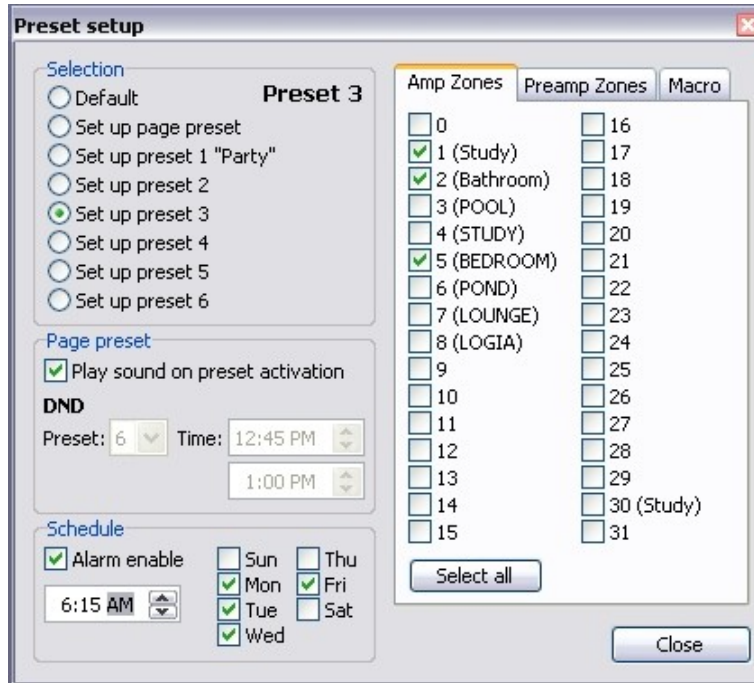


If the Play Sound tab was selected the down loaded wave file is played in a continuous loop for the duration of the contact closure.

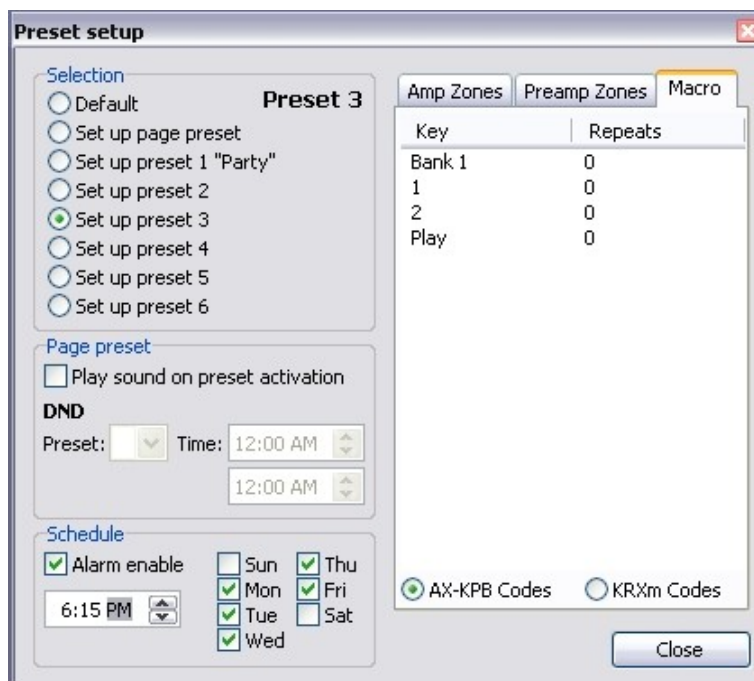
When the contact is opened the multi-zone amplifier returns to previous settings.

Alarm Clock programming:

An alarm clock event may be included in a preset. It utilises the 'Schedule' panel. As shown below: Mon – Fri are selected and the time set @ 6:15am. The preset 3 command will then be invoked at 6:15 in the morning Monday – Friday. The Amp Zones that are scheduled to be included in the alarm clock are checked.



Source control included in Alarm clock programming: If an AX-KPB keypad is connected to the 451/452AV amplifier then the Keypad can be made to emit it's learnt IR commands as part of a Alarm clock macro. Open the Keypad window, and in the Preset setup window select the 'Macro' tab. Using left mouse click over the keypads keys select the required functions: i.e. 'S1 select', '1', '2', 'Play'. The sequence is entered into the macro window. Select 'Default' to save and exit. The system is now programmed to select the Source 1 (CD player) and play disc 12 every Mon – Friday at 6:15am.



USB DRIVER SETUP

If the software has been installed using the Axiom software suite, the PC will detect and install the correct USB driver for the 451/452AV amplifier.

Should the PC encounter a setup problem follow the driver installation procedure:

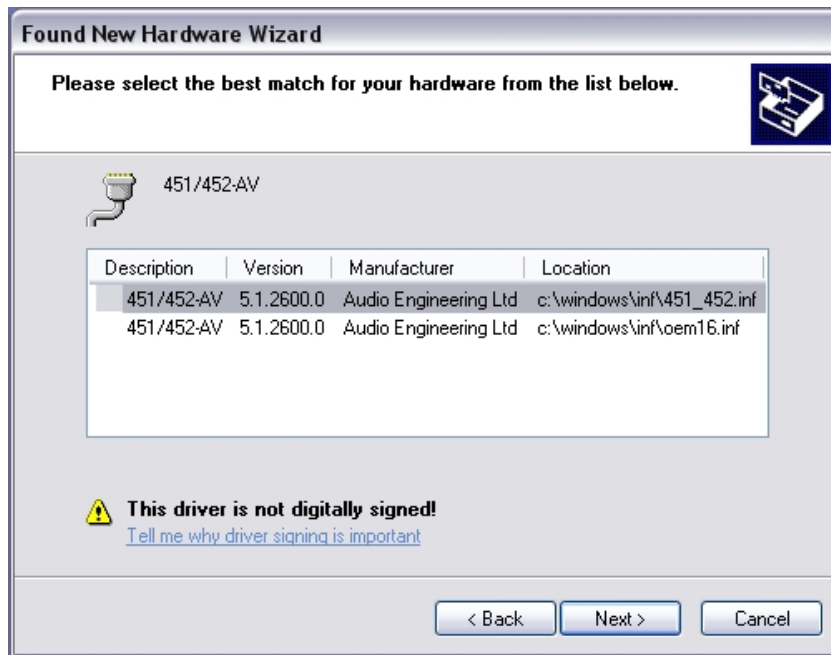
When first connecting USB to a Axiom multi-zone amplifier, Windows XP finds new hardware and the "New Hardware Wizard" is displayed:



Select "Yes, this time only" and push "Next >" to continue



Select "Install the software automatically (Recommended)" and push "Next >"
Windows searches and locates the required driver.



Select the 451_452.inf driver, agree to install the driver by pushing "Next >". Windows installs the driver for the connected USB port.



Push "Finish" to exit the wizard.